

# Service Document **Exchange Set**

## **Yacht Boy 2000**

**GRR1600**

### **Service Manual**

Sicherheit  
Safety

Materialnr./Part No.  
720108000001



Es gelten die Vorschriften und Sicherheitshinweise gemäß dem Service Manual „Sicherheit“, Materialnummer 720108000001, sowie zusätzlich die eventuell abweichenden, landesspezifischen Vorschriften!



The regulations and safety instructions shall be valid as provided by the „Safety“ Service Manual, part number 720108000001, as well as the respective national deviations.

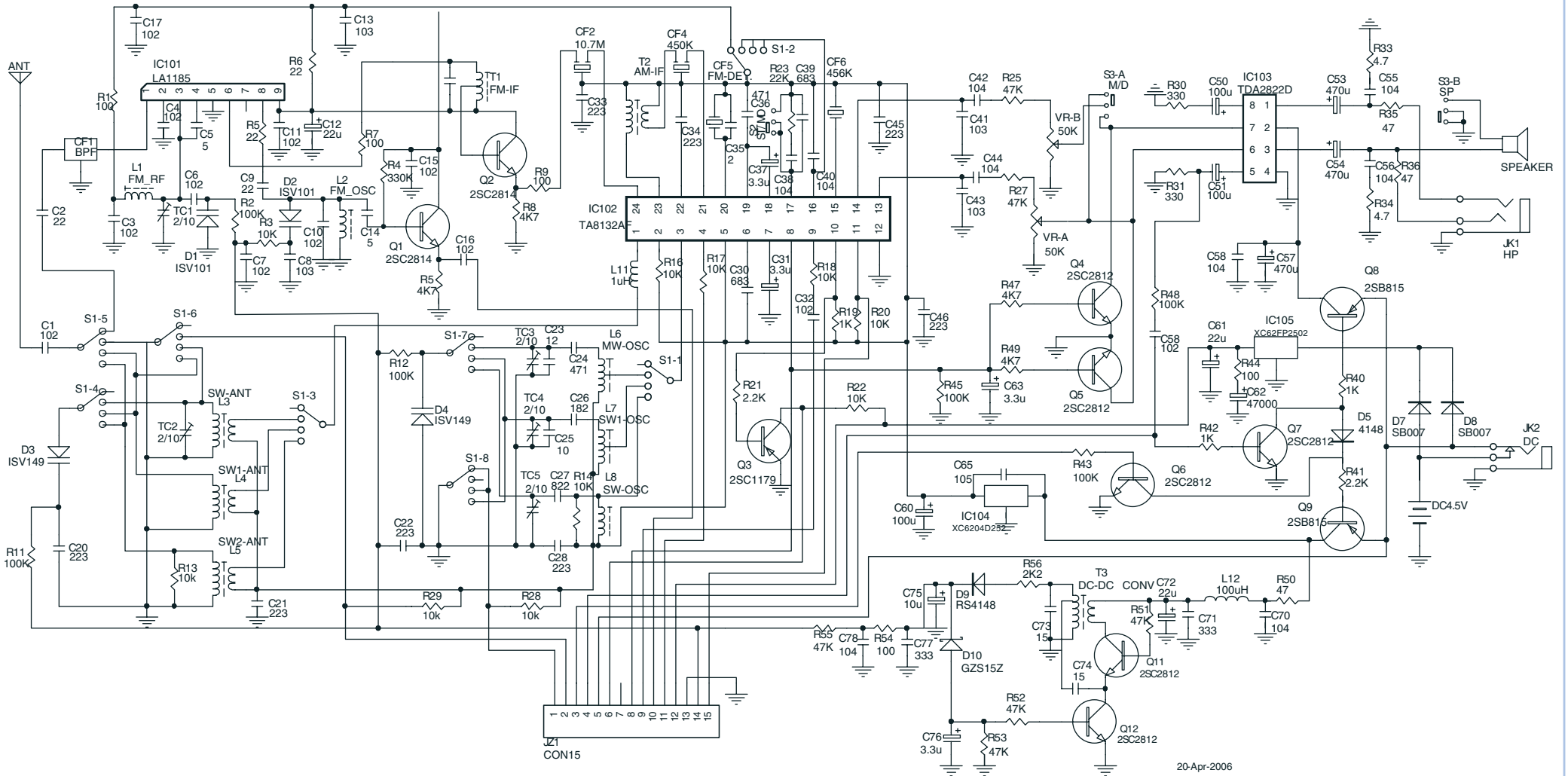
Dieses Service Dokument ist nur in Datenform verfügbar

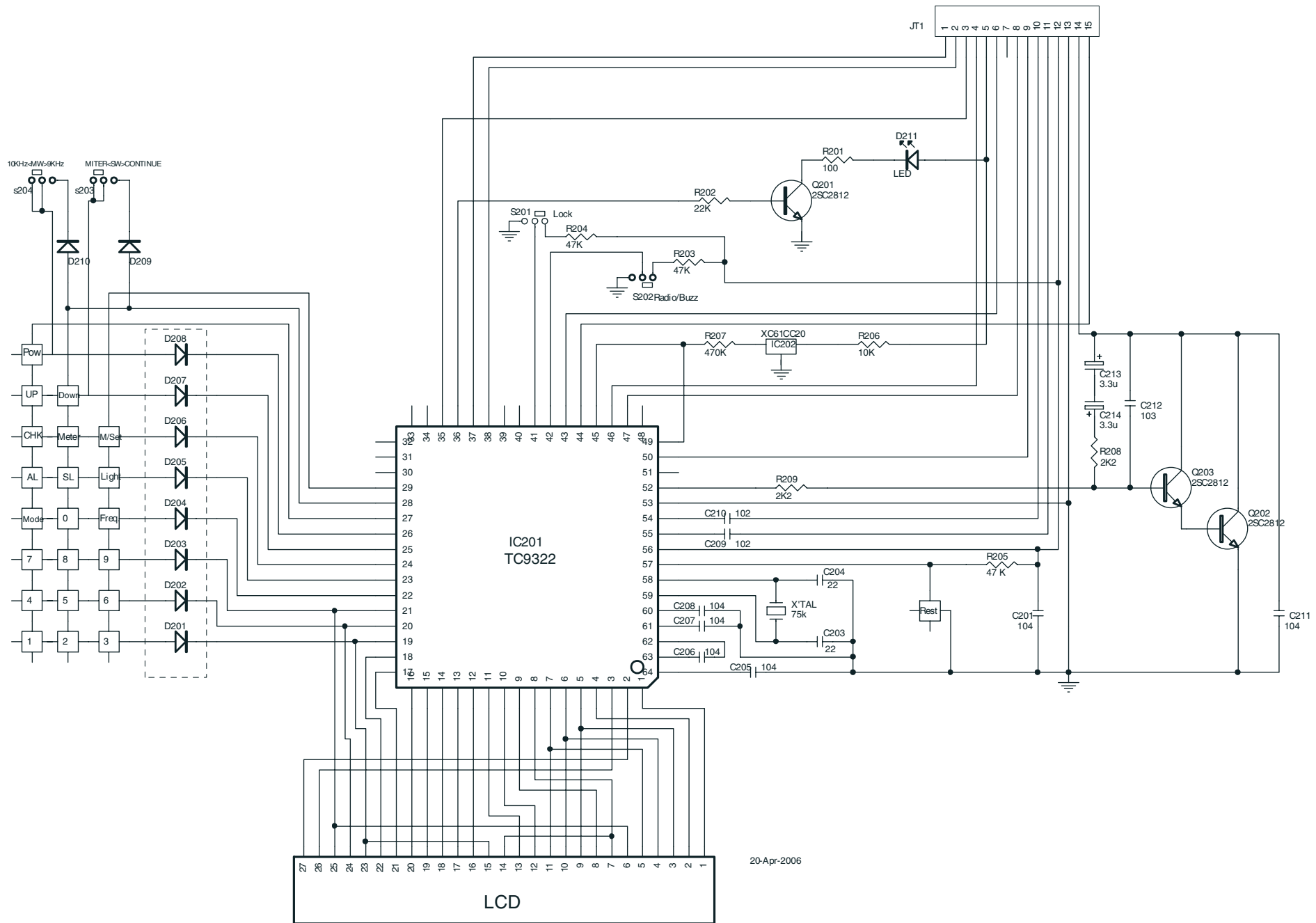
This Service Document is only available as data

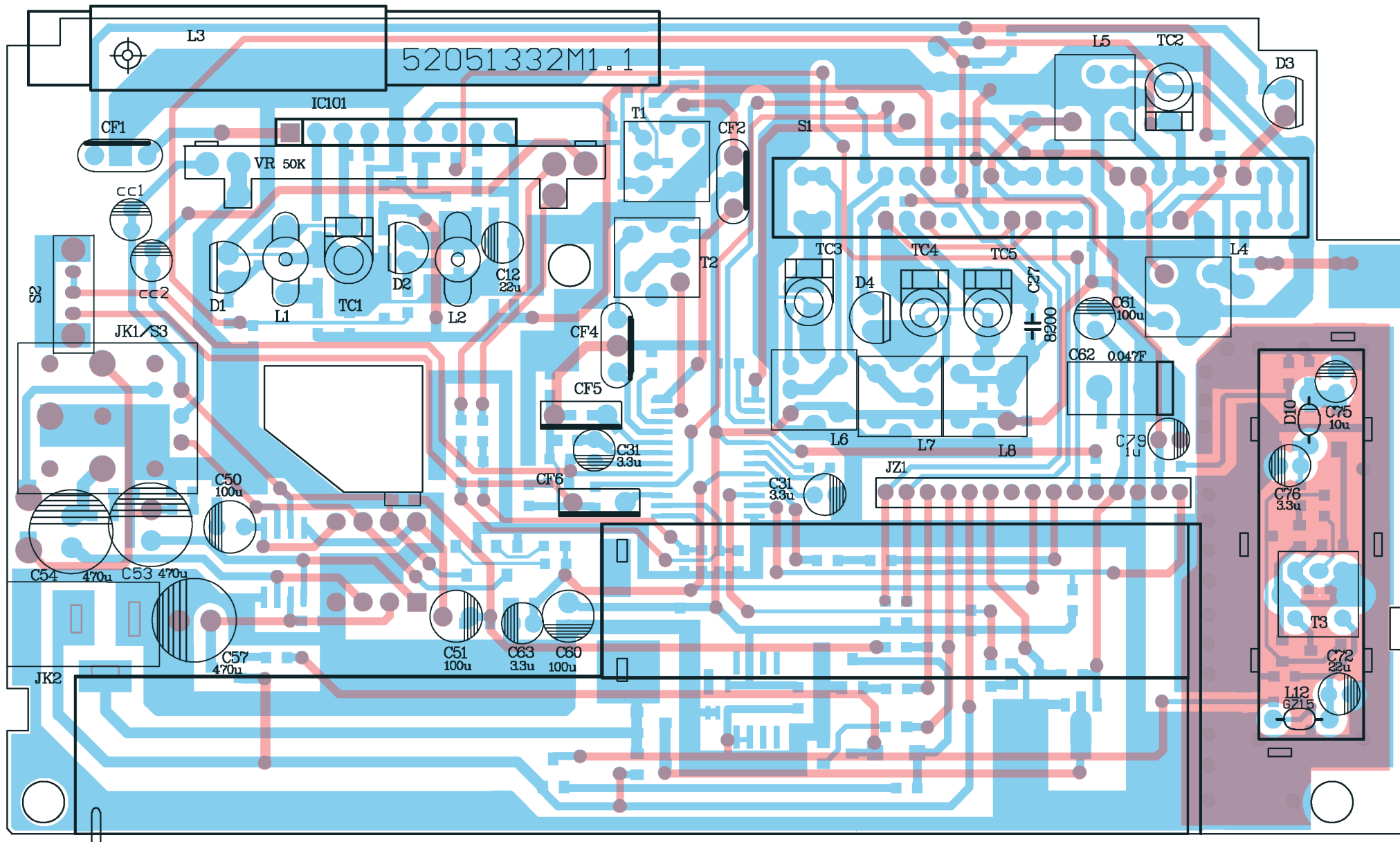
Änderungen vorbehalten/Subject to alteration

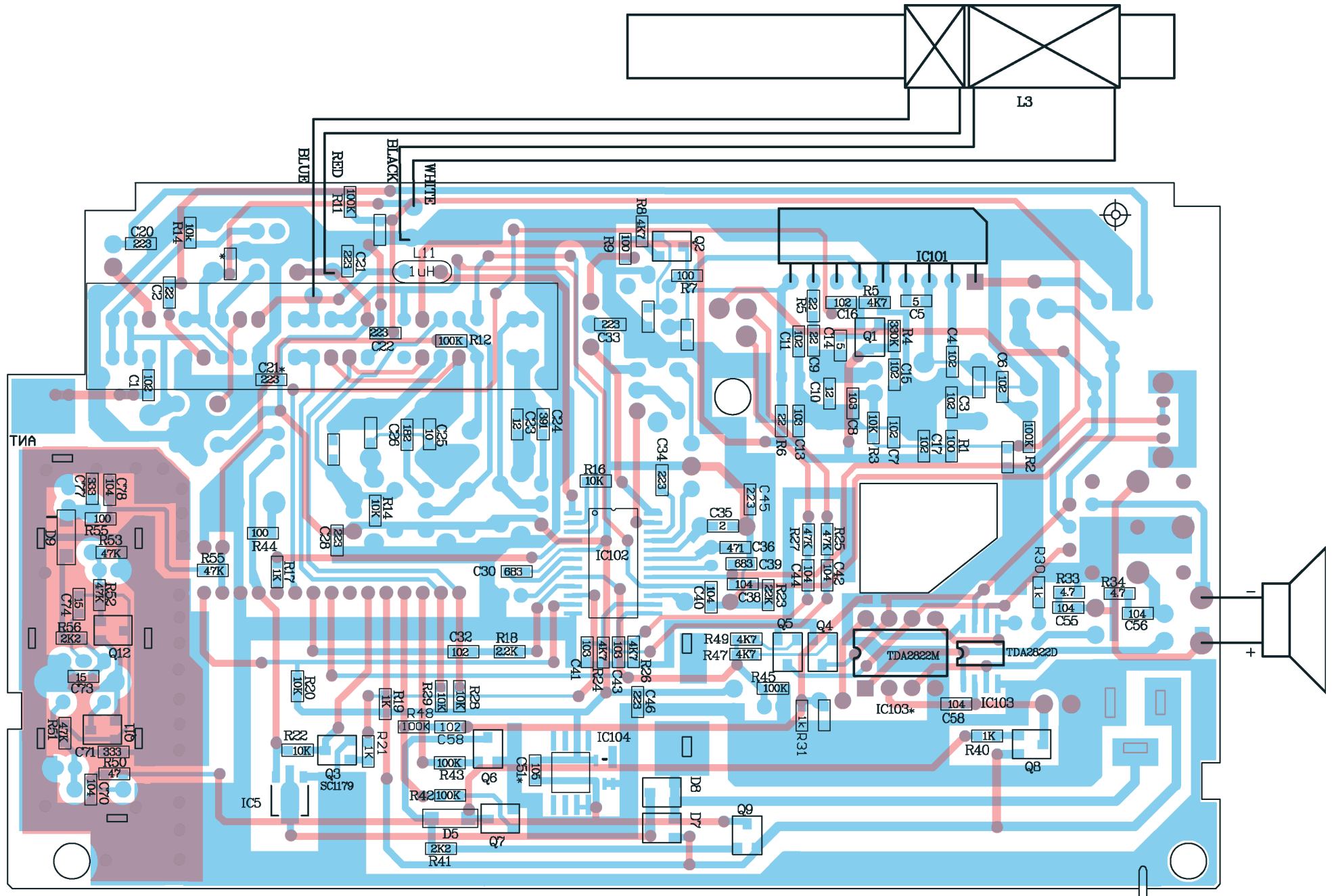
Made by GRUNDIG in Germany • TCC 0806 HH

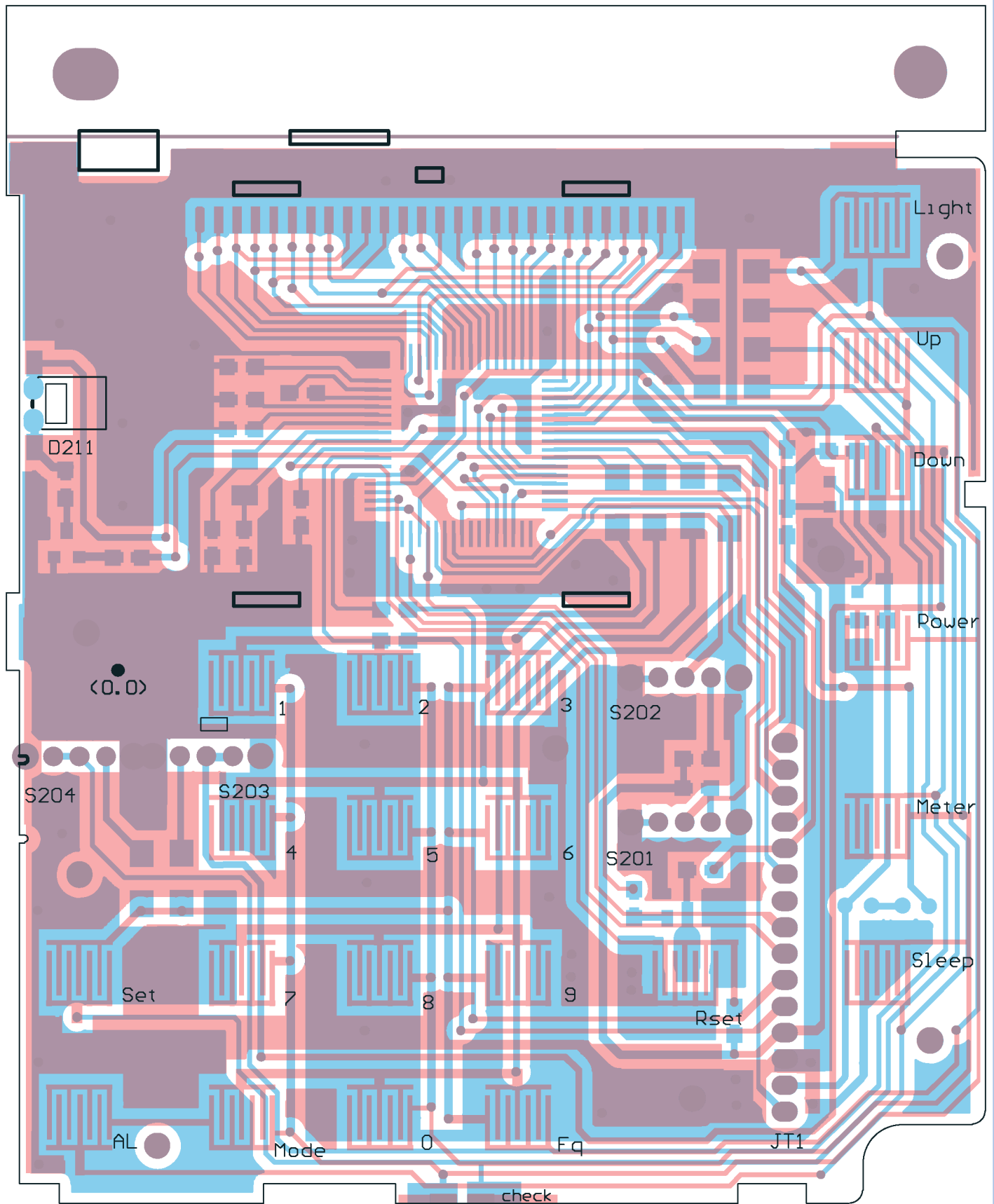
<http://www.grundig.com>

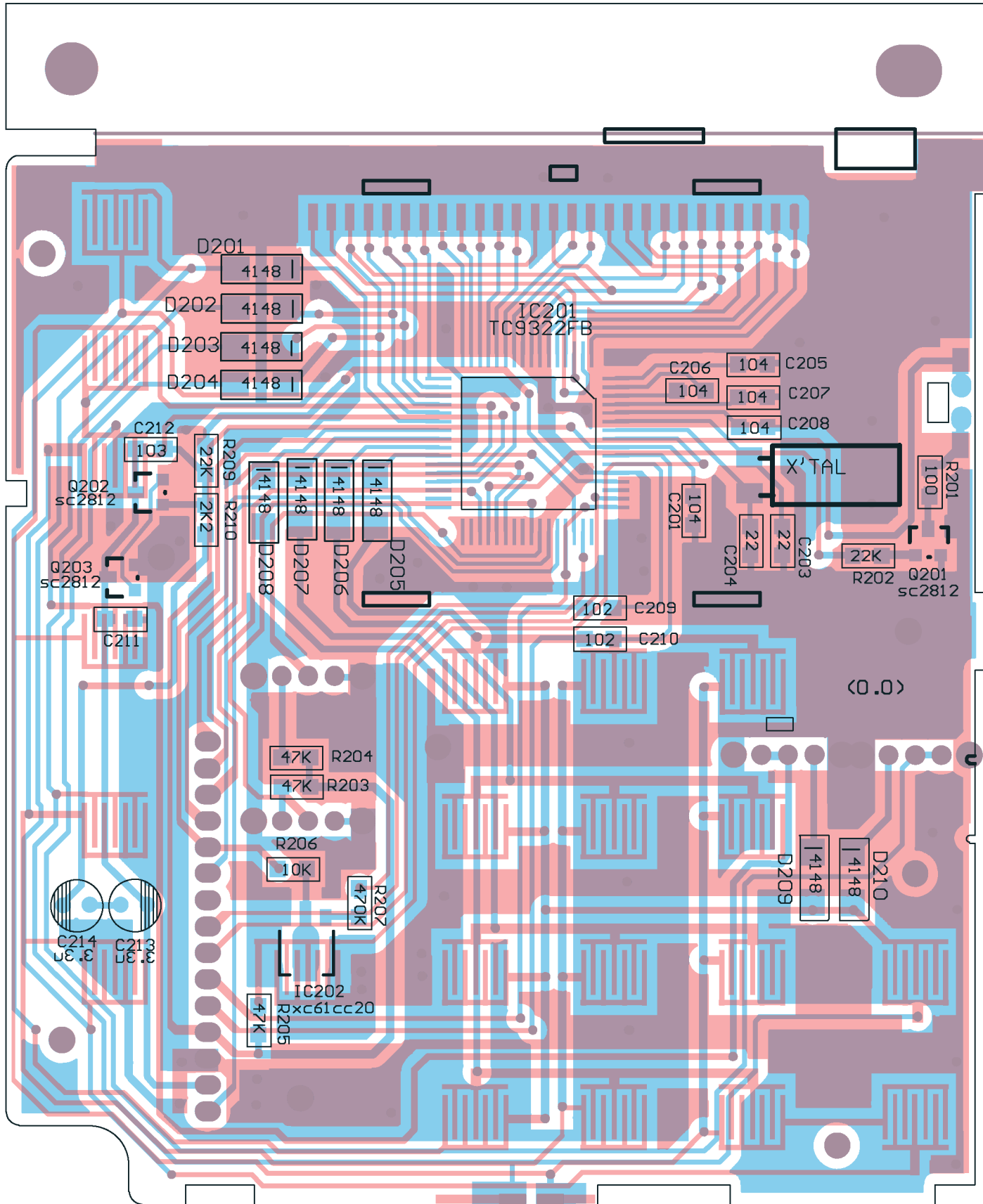










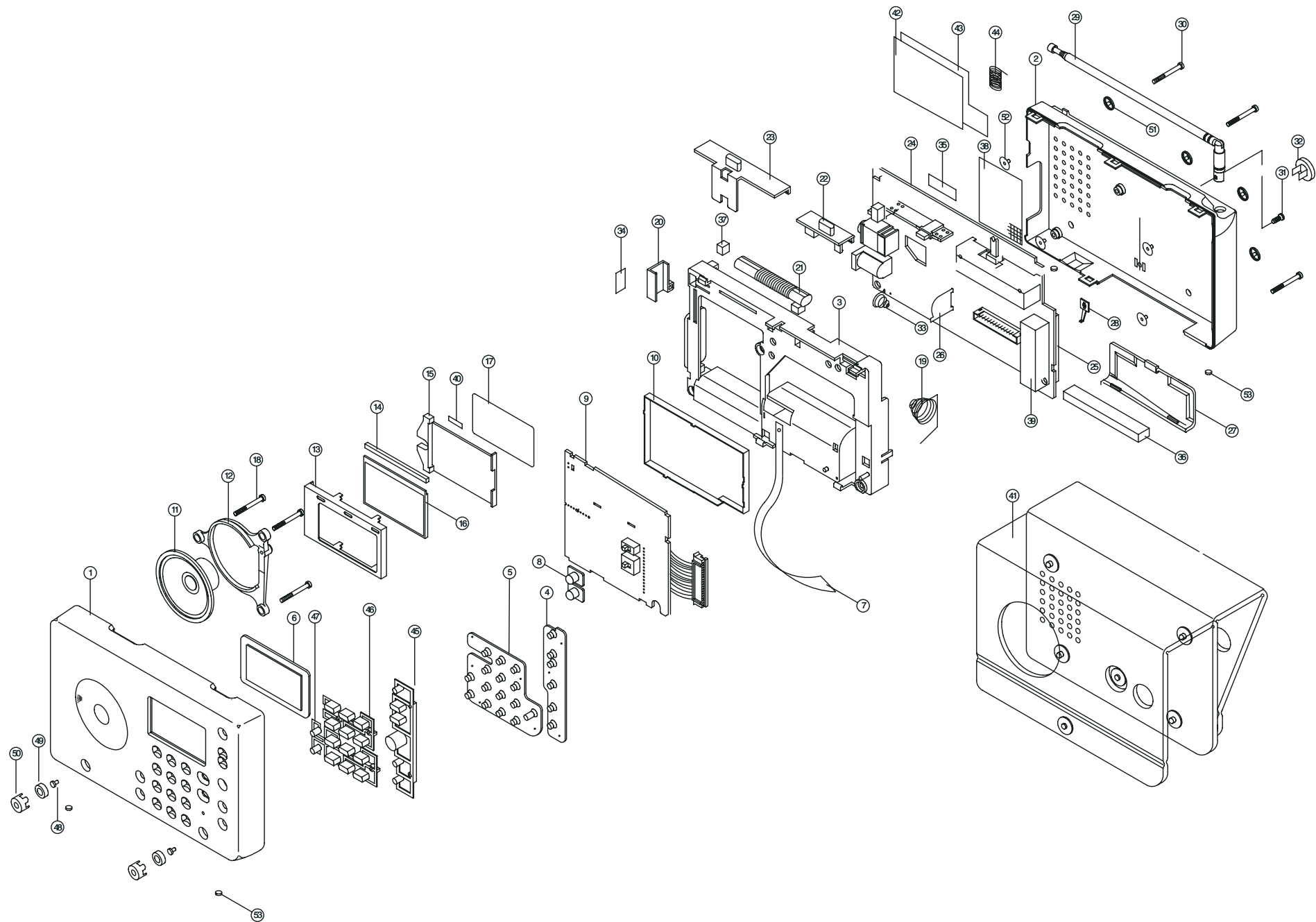


## Yacht Boy 2000 ALIGNMENT INSTRUCTIONS

CIRCUIT ALIGNMENT	STEP	EQUIPMENT CONNECTION	STEP	RECEIVER FERQ.	ADJUSTMENTS
1. AM IF	1	Connect a capacitor of 2.2u to pin 6 & pin 5 of IC2	1	MW or SW1 or SW2 Any frequency of no broadcasting station occupied	Adjust T2 for maximum output.
		450kHz sweep generator to pin 3 of IC2 (TP3)			
		Sweep monitor to pin 19 of IC2 (TP4)			
2. FM IF	2	10.7MHz sweep generator to pin 4 of IC1(TP2)	2	FM Any frequency of no broadcasting station occupied	Adjust T1 for S-curve response is in maximum slope and symmetrical to the center frequency of the FM-IF filter.
		Sweep monitor to pin 19 of IC2 (TP4)			
3.MW VCO	3_1	Connect a high impedance DC-voltmeter to pin 14 of the connector (TP1)	3_1	MW 520kHz or 522kHz	Adjust L6 for meter reading is 1.05 +/-0.2V
	3_2		3_2	MW 1710kHz or 1620kHz	
	3_3		3_3	Repeat 3-1 & 3-2	
4.SW1 VCO	4_1	Connect a high impedance DC-voltmeter to pin 14 of the connector (TP1)	4_1	SW1 2.30MHz	Adjust L7 for meter reading is 1.05 +/-0.1V
	4_2		4_2	SW1 7.40MHz	Adjust TC4 for meter reading is 9.8V+/-0.2V
	4_3		4_3	Repeat 4-1 & 4-2	
5.SW2 VCO	5_1	Connect a high impedance DC-voltmeter to pin 14 of the connector (TP1)	5_1	SW2 9.40MHz	Adjust L8 for meter reading is 2.0V +/-0.1V
	5_2		5_2	SW2 26.10MHz	Adjust TC5 for meter reading is 9.8V+/-0.2V
	5_3		5_3	Repeat 5-1 & 5-2	



CIRCUIT ALIGNMENT	STEP	EQUIPMENT CONNECTION	STEP	RECEIVER FERQ.	ADJUSTMENTS
<b>6.FW VCO</b>	6_1	Connect a high impedance DC-voltmeter to pin 14 of the connector (TP1)	6_1	<b>FM</b> 87.50MHz	Adjust L2 for meter reading is 2.0V +/-0.3V
	6_2		6_2	<b>FM</b> 108.00MHz	
	6_3		6_3	Repeat 6-1 & 6-2	
<b>7.MW RF</b>	7_1	MW RF signal generator to loop antenna.(RF with 1kHz mod.) AC-voltmeter to the speaker terminals (TP6)	7_1	<b>MW</b> 558kHz or 560kHz	Adjust L3 for maximum output,then,check STEP 3-1 and 3-2. Re peat STEP 3-2 if necessary.
	7_2		7_2	<b>MW</b> 1440kHz	
	7_3		7_3	Repeat 7-1 & 7-2	
<b>8.SW1 RF</b>	8_1	SW1 RF signal generator direct connected to antenna end via 12pF(TP5).(RF with 1kHz 30% mod.). AC-voltmeter to the speaker terminals (TP6)	8_1	<b>SW1</b> 2.40MHz	Adjust L4 for maximum output.
	8_2		8_2	<b>SW1</b> 7.10MHz	Check the image rejection ratio is better than 6dB
<b>9.SW2 RF</b>	9_1	SW2 RF signal generator direct connected to antenna end via 12pF(TP5).(RF with 1kHz 30% mod.). AC-voltmeter to the speaker terminals (TP6)	9_1	<b>SW2</b> 9.50MHz	Adjust L5 for maximum output.
	9_2		9_2	<b>SW2</b> 25.60MHz	Check the image rejection ratio is better than 1dB
<b>10.FM RF</b>	10_1	FM RF signal generator direct connected to antenna end (TP5)(1kHz mod. 22.5kHz dev.). AC-voltmeter to the speaker terminals (TP6)	10_1	<b>FM</b> 88.00MHz	Adjust L1 for maximum output.
	10_2		10_2	<b>FM</b> 106.00MHz	Adjust TC1 for maximum output.
	10_3		10_3	Repeat 10-1 & 10-2	



## Ersatzteilliste Spare Parts List

# AUDIO

### 10 / 2006

### YACHT BOY 2000

BESTELL-NR. / ORDER NO.: GRR1600

POS. NR. POS. NO.	ABB. FIG.	MATERIAL-NR. PART NUMBER	ANZ. QTY.	BEZEICHNUNG <b>(D)</b>	DESCRIPTION <b>(GB)</b>
		GRR1600		YACHT BOY 2000 STERLING SILBER KEIN E-TEIL	YACHT BOY 2000 STERLING SILVER NO SPARE PART
0027.000 0029.000		759540370800 759540370900		BATTERIEFACHDECKEL STABANTENNE	BATTERIE COVER ROD ANTENNA
		720114069000		BEDIENUNGSANLEITUNG D,GB,F,I,P,E,NL,PL,DK,S,FIN	INSTRUCTION MANUAL D,GB,F,I,P,E,NL,PL,DK,S,FIN
				<b>HINWEIS!</b> IM DEFEKTFALL NEHMEN SIE KONTAKT MIT UNSERER HOTLINE AUF	<b>NOTE!</b> IN THE EVENT OF A DEFECTIVE PLEASE CONTACT YOUR SERVICE

Es gelten die Vorschriften und Sicherheitshinweise gemäß dem Service Manual "Sicherheit", Mat.-Nummer 720108000001, sowie zusätzlich die eventuell abweichenden, landesspezifischen Vorschriften!



The regulations and safety instructions shall be valid as provided by the "Safety" Service Manual, part number 720108000001, as well as the respective national deviations.

ÄNDERUNGEN VORBEHALTEN / SUBJECT TO ALTERATION